



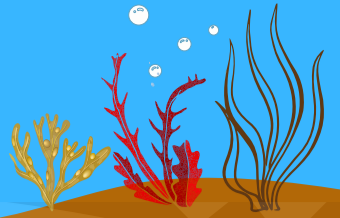
TAUTUHI RIMURIMU

*Te whānau rimurimu
kei Te Upoko o Te Ika*



HINONGA RIMURIMU

RIMURIMU PARĀONE



TĪREPA HUHUA

Flapjack

Carpophyllum Maschalocarpum



TĪREPA KOIKOI

Seawrack

Carpophyllum flexuosum



RIMU KAKAUROA

Bladder / Giant Kelp

Macrocystis pyrifera



RIMU KAKAU

Stalked Kelp

Ecklonia radiata



RIMU KAKAUTINI

Strapweed

Lessonia variegata



RIMU KAKAU MOANA

Gummy weed

Splachnidium rugosum



NIHO TANIWHA HUHUA

Sawtoothed comb

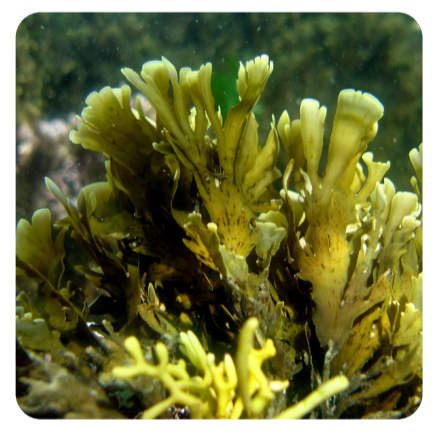
Marginariella boryana



NIHO TANIWHA POROTAKA

Sawtoothed comb

Marginariella urvilliana



RIMU WHERAWHERA

Zonaria

Zonaria aureomarginata



ARAMOANA

Zigzag weed

Cystophora torulosa



ARAMOANA TAKAWIRI

Zigzag weed

Cystophora retroflexa



ARAMOANA PARARAHĪ

Zigzag weed

Cystophora scalaris



RIMU TUAHURU

Dictyota

Dictyota kunthii



RIMU TŌNGĀMIMI

Neptunes necklace

Hormosira banksii

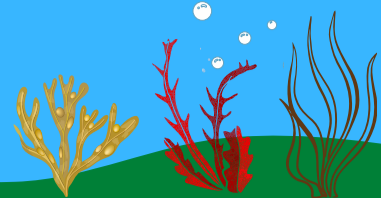


RIMURAPA

Bull kelp

Durvillaea antarctica

RIMURIMU



PARĀONE

KĀKĀRIKI



WAKAME
Asian kelp
Undaria pinnatifida



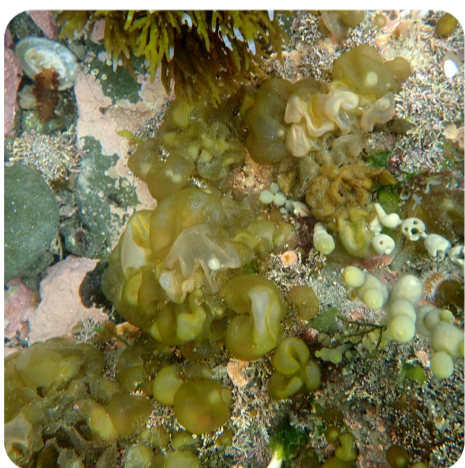
RIMURIMU
Sea Rimu
Caulerpa brownii



RIMU PARAHA
Oak-shaped leaves
Landsburgia quercifolia



RIMUREPE
Sea Rimu
Caulerpa geminata



RIMU KŌPŪWAI
Sacweed
Colpomenia sp.



RIMU KAIKAI
Sea Lettuce
Ulva sp.



RIMU TĀTARA
Scytothamnus
Scytothamnus australis



RIMU MŌNEHU Ā PAPA
Encrusting Velvet Weed
Codium convolutum



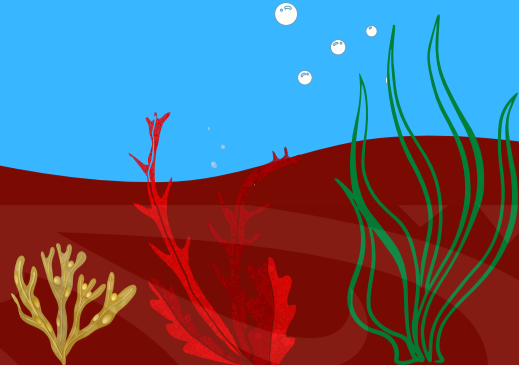
RIMU RĪRAPA
Filamentous
Ectocarpus sp



RIMU MŌNEHU Ā TIPU
Branching Velvet Weed
Codium Fragile

RIMURIMU

KURA



PŪHERO Ā TIPU

Coralline
Branched



PŪHERO Ā PAPA

Coralline
Encrusting



KARENGO / PARENGO

Pyropia / Porphyra sp.



RIMU KĀNIWHA

Harpoon Weed
Asparagopsis
armata



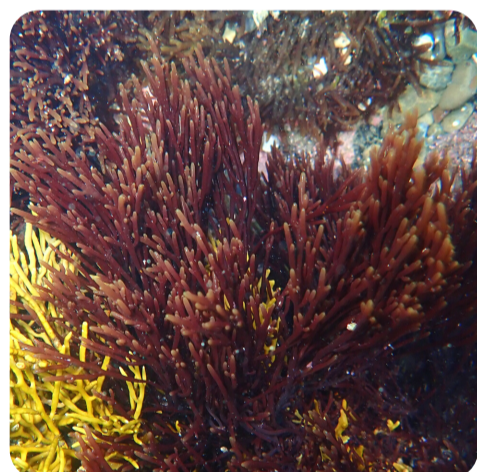
RIMU PIA

Agar Weed
Pterocladia lucida



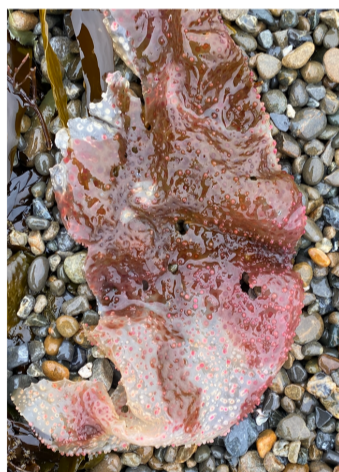
RIMU HURUHERO

Euptilota
Euptilota formosissima



RIMU HIHIHIWI

Champia
Champia novae-zelandiae



RIMU HUAHUA

Carageenan weed
Gigartina Atropurpurea



RIMU TOKORERA

Carageenan weed
Gigartina clavifera

Ngā Whakamānawa

He kohinga rimurimu ēnei ka kitea i ngā taimoana i Te Whanganui ā Tara. I puta mai tēnei rauemi i a Te Aho Tū Roa me Te Kura Kaupapa Māori o Ngā Mokopuna i raro i te Hinonga Rimurimu / Love Rimurimu Project 2020. Kāore e ārikarika ana ngā mihi ki ngā tini mātanga nō Te Ātiawa / Taranaki Whānui, Rongomaiwahine/Kahungunu, nō VUWCEL, nō NIWA, nō GWRC, nō ngā hāpori o Pōneke, o Ōtaki hoki i awhinatia te kaupapa i tēnei tau: Dennis Ngāwhare Pounamu, Ewan Pohe, Bart Cox, Sheryl Miller, Roberta D'Archino, Chris Cornwall, Debra Bustin. E tūmanakotia ana ka whakaawe tonu te pitomata o tēnei taonga hei oranga taiao, hei oranga tāngata. Tihei Rimurimu!



Te Kura Kaupapa Māori o
NGĀ MOKOPUNA

