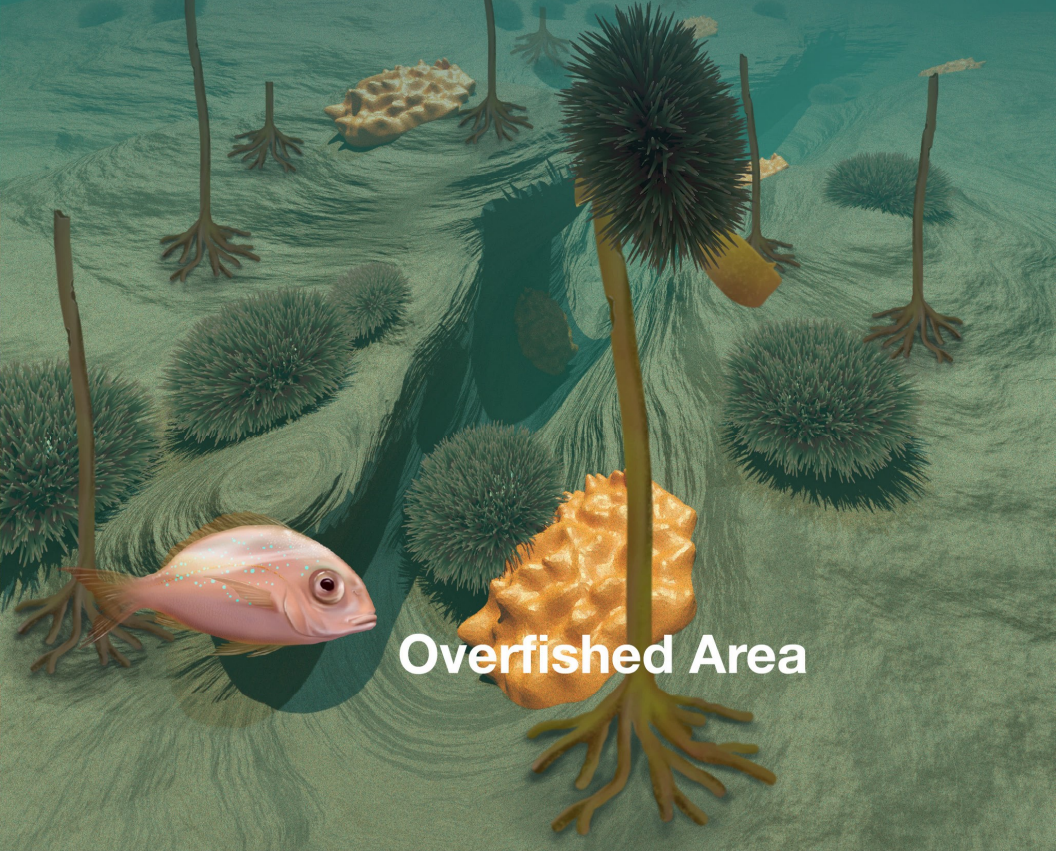


# Losing predators from ecosystems changes the balance of species

Ecosystems have evolved over millennia and have delicate predator-prey relationships. Removing predators, in this case tamare (snapper) and koura (rock lobster) allows kina (urchins) to overgraze kelp forests.



Marine Protected Area



Overfished Area



Department of  
Conservation  
*Te Papa Atawhai*