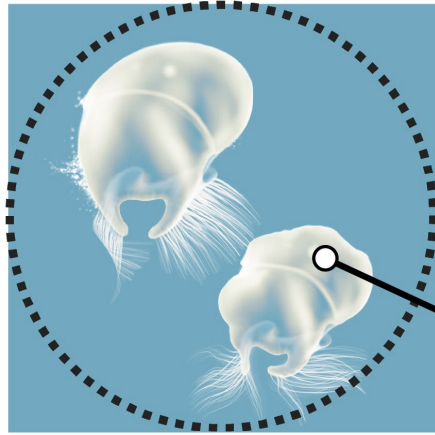


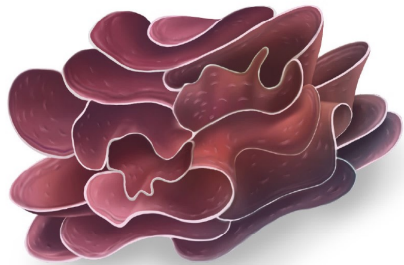
The ocean is getting more acidic

Globally, our oceans absorb about one-third of the carbon that we emit. This carbon dioxide turns the ocean acidic, affecting creatures with calcium-carbonate shells like pāua, mussels and corals.

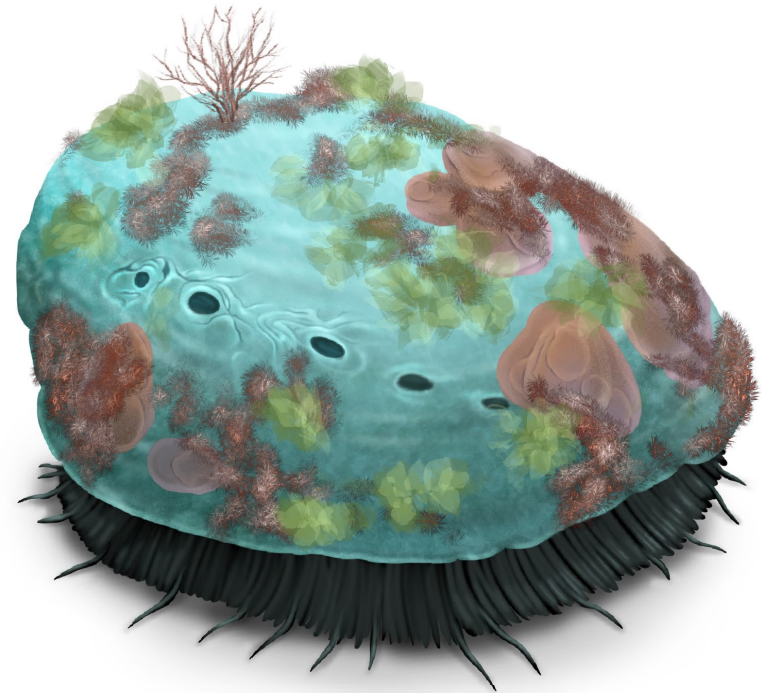
Larvae will have deformed shells and difficulty swimming.



Deformed shell



Pāua larvae will have less settlement habitat because calcified coralline algae is growing slower.



Pāua will struggle to build protective shells.



Department of
Conservation
Te Papa Atawhai